

WATSON RESERVE

Overview Plan

MASTER PLAN

LEGEND

- Existing wetland area (approximate extents - varies seasonally)
- Existing light posts - recommend renewal / upgrade as required
- Existing pathway network (note - river pathway shown separately)
- Proposed new local native trees (suggest *Agonis flexuosa* - WA Peppermint)
- Proposed new concrete path link to match existing
- Proposed new crushed limestone path to match existing, to link bridge with existing path along reserve (possibly seal in future)
- Proposed low barrier fence to separate open space area from bush (i.e. open rural style fencing on posts)
- Possible future new 2.5m wide sealed red coloured universally accessible pathway, to match River Heritage Trail pathway
- Possible future circuit path link 2m wide
- Possible future extension to boardwalk, to Scouts end
- Possible future new public artwork (indicative location)

EXISTING FEATURES

- A Public toilet block
- B Access driveway
- C Informal car parking
- D Informal canoe launching area (beach)
- E Popular fishing area
- F Popular dog swimming area (beach)
- G Services - covers (maintain access)
- H Concrete path from car park to toilets
- J Maintenance vehicle access point
- K Bore pump / irrigation controls
- L Flood lights near toilets
- M Firebreaks along property boundaries
- N Fishing platform (Scout Hall end)
- OS Open space area - reticulated turf

General notes:

- Recommended natural look and feel wherever possible, including timber-look materials and earthy colours
- Proposed retention of stumps and logs for dog play features and for habitat

PROPOSED IMPROVEMENTS (subject to feasibility and funding)

- Iron filtration unit and enclosure (installed in 2020/21)
- Proposed improvements to existing boardwalks and 'bridge' into reserve
- Proposed cement stabilised limestone path to link bridge to existing path (possibly seal in future with universally accessible material) together with proposed barrier to restrict vehicle access across pathway to beach area (suggest heavy logs along car park side of path, possibly replace in future with bollards)
- Proposed new picnic shelter with accessible picnic setting
- Proposed link path from toilets to river side path via gazebo, to link with path along river
- Proposed seating, possibly low square multi-use platforms
- Proposed double bin enclosures, possibly incorporating fishing hook and line bins
- Proposed park welcome signage and possible code of shared use (2 signs near car park in main part of reserve, 1 sign at Scouts Hall end)
- Proposed removal of existing U-bar in path, if no longer required
- Proposed seat adjacent path, near popular dog swim beach
- Proposed renewal / upgrade of reserve lighting, as required
- Make dog swim beach safer by removing submerged rocks
- Proposed new tree planting - suggest *Agonis flexuosa* (WA Peppermint) as primary species
- Proposed installation of fauna nesting boxes for native micro-bats (locate on site)
- Proposed to retain and refurbish existing memorial seat; suggest relocating in future onto or near 'future possible new river platform' (as identified below)
- Proposed new 2.5m wide universally accessible path surface along 'park' area of reserve (area with reticulated turf/open space)
- Proposed renewal or existing gazebo and new accessible ramped pathway links
- Proposed new drink fountain with dog water bowl
- Proposed new vehicle exclusion bollards around car park (e.g. composite material) to replace existing bollards, limestone blocks and temporary logs
- Proposed bicycle parking (location to be confirmed)
- Proposed upgrade of signage at top of access driveway
- Proposed improvements near the Scout Hall including to the river fishing platform and the access pathway, plus signage and removable bollards to restrict unauthorised vehicles
- Proposed future environmental projects including river bank erosion mitigation works (throughout Reserve) and ongoing bushland weed removal
- Proposed low barrier fence between open park area and bush area (open at both ends), to deter dogs from running through the wetland areas (at recommendation of DBCA)

POSSIBLE FUTURE IMPROVEMENTS (subject to feasibility and funding)

- Possible future new river fishing platform - suggest a leaf shaped deck or floating platform
- Possible future additional reserve signage including directional / informational
- Possible future upgrade to car parking - recommend natural look 'earth coloured' surfacing (work around existing trees - retain)
- Possible future parking area for trailers (work around existing trees - retain)
- Possible future mobile trader bay (work around existing trees - retain)
- Possible future modification to access driveway entrance and bottom end, to create two vehicle pull-over bays for safer vehicle access and egress / improve general safety of driveway
- Possible new maintenance access points, with removable bollards
- Possible future path circuit linking toilets with proposed new river platform
- Possible future interpretive signage - to tie in with River Heritage Trail
- Possible future refurbishment of steps at 'dog swim beach'
- Possible future extension of boardwalk to Scout Hall end (subject to funding - i.e. grants)
- Possible future security camera - in most suitable location with view to car park and toilets (indicative location shown only)
- Possible additional dog waste bag dispensers, if required
- Possible opportunities for 'art in the park' e.g. dog themed / native fauna
- Possible future enhanced river access for recreational purpose, subject to recommendations from Lower Collie River Master Plan (erosion mitigation) project
- Proposed incorporation of 'dua' naming on reserve signage, to incorporate Noongar name for the reserve - to be selected and confirmed with the appropriate local Elders (not shown on plan)

All proposed / possible future works are subject to feasibility, approval, funding and detailed design

DESIGN OBJECTIVES

- To preserve and enhance the natural landscape character of the reserve
- To improve access and inclusion opportunities for people of all abilities and their dogs
- To improve safety and security (real and perceived) for reserve users
- To provide additional landscape amenities to enhance visitor comfort and experiences
- To protect and enhance the natural environment, including the riparian edge, plus native flora and fauna
- To create opportunities for physical and social connectivity, including path links and cultural expression

Not to scale

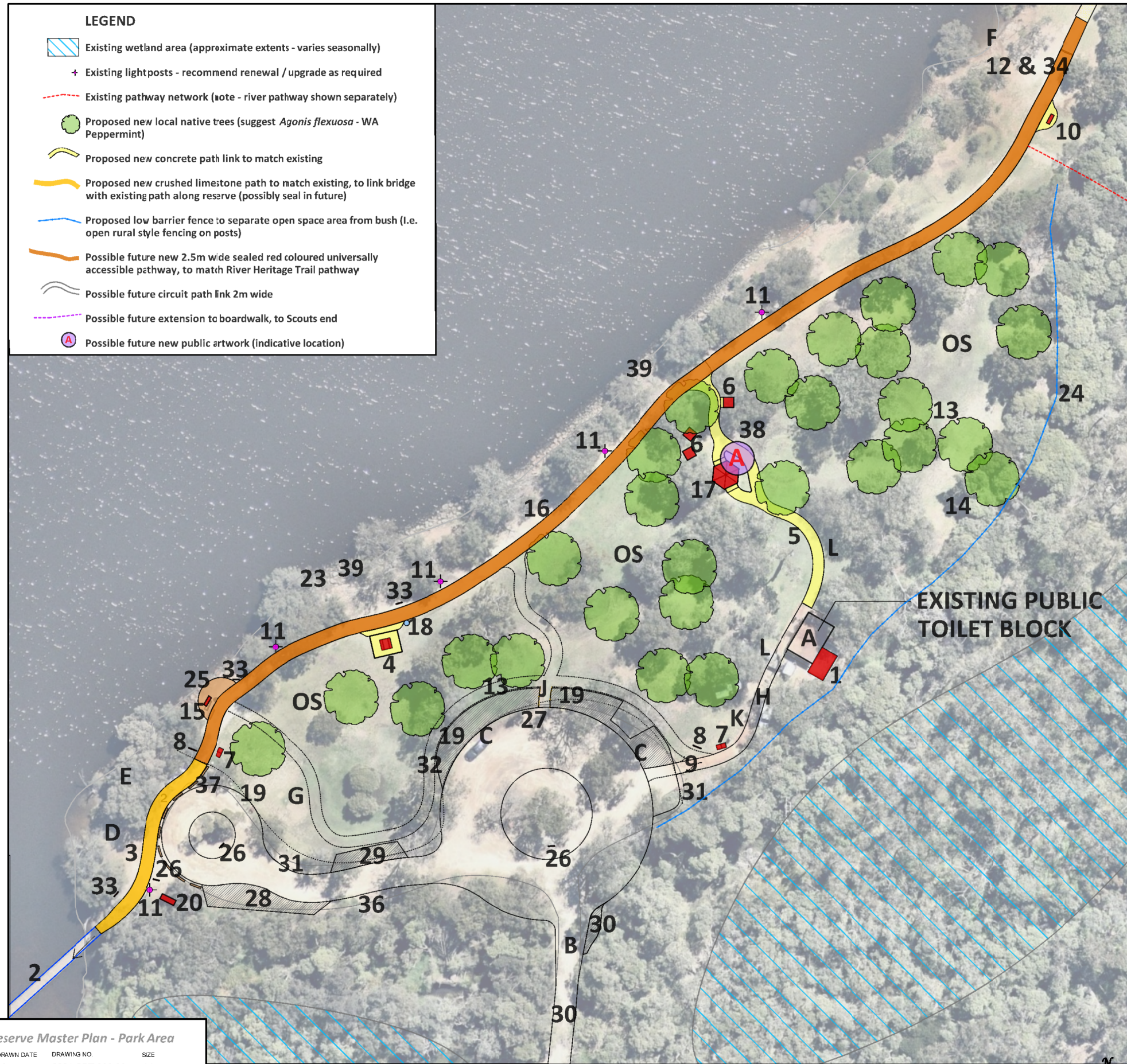
Watson Reserve Master Plan - Overview

DESIGNED	DRAWN DATE	DRAWING NO.	SIZE
VP	20-11-2018	2021-CPT-006-01	A1
DRAWN	AUTHORISED	REVISION	ENDORSED
VP	LB	6-05-2021	26/05/2021 (OCM:149-21)

WATSON RESERVE

Park Area

MASTER PLAN



LEGEND

- Existing wetland area (approximate extents - varies seasonally)
- Existing lightposts - recommend renewal / upgrade as required
- Existing pathway network (note - river pathway shown separately)
- Proposed new local native trees (suggest *Agonis flexuosa* - WA Peppermint)
- Proposed new concrete path link to match existing
- Proposed new crushed limestone path to match existing, to link bridge with existing path along reserve (possibly seal in future)
- Proposed low barrier fence to separate open space area from bush (i.e. open rural style fencing on posts)
- Possible future new 2.5m wide sealed red coloured universally accessible pathway, to match River Heritage Trail pathway
- Possible future circuit path link 2m wide
- Possible future extension to boardwalk, to Scouts end
- Possible future new public artwork (indicative location)

EXISTING FEATURES

- A Public toilet block
- B Access driveway
- C Informal car parking
- D Informal canoe launching area (beach)
- E Popular fishing area
- F Popular dog swimming area (beach)
- G Services - covers (maintain access)
- H Concrete path from car park to toilets
- J Maintenance vehicle access point
- K Bore pump / irrigation controls
- L Flood lights near toilets
- M Firebreaks along property boundaries
- N Fishing platform (Scout Hall end)
- OS Open space area - reticulated turf

General notes:

- Recommended natural look and feel wherever possible, including timber-look materials and earthy colours
- Proposed retention of stumps and logs for dog play features and for habitat

PROPOSED IMPROVEMENTS (subject to feasibility and funding)

- Iron filtration unit and enclosure (installed in 2020/21)
 - Proposed improvements to existing boardwalks and 'bridge' into reserve
 - Proposed cement stabilised limestone path to link bridge to existing path (possibly seal in future with universally accessible material) together with proposed barrier to restrict vehicle access across pathway to beach area (suggest heavy logs along car park side of path, possibly replace in future with bollards)
 - Proposed new picnic shelter with accessible picnic setting
 - Proposed link path from toilets to river side path via gazebo, to link with path along river
 - Proposed seating, possibly low square multi-use platforms
 - Proposed double bin enclosure, possibly incorporating fishing hook and line bins
 - Proposed park welcome signage and possible code of shared use (2 signs near car park in main part of reserve, 1 sign at Scouts Hall end)
 - Proposed removal of existing U-bar in path, if no longer required
 - Proposed seat adjacent path, near popular dog swim beach
 - Proposed renewal / upgrade of reserve lighting, as required
 - Make dog swim beach safer by removing submerged rocks
 - Proposed new tree planting - suggest *Agonis flexuosa* (WA Peppermint) as primary species
 - Proposed installation of fauna nesting boxes for native micro-bats (locate on site)
 - Proposed to retain and refurbish existing memorial seat; suggest relocating in future onto or near 'future possible new river platform' (as identified below)
 - Proposed new 2.5m wide universally accessible path surface along 'park' area of reserve (area with reticulated turf/open space)
 - Proposed renewal or existing gazebo and new accessible ramped pathway links
 - Proposed new drink fountain with dog water bowl
 - Proposed new vehicle exclusion bollards around car park (e.g. composite material) to replace existing bollards limestone blocks and temporary logs
 - Proposed bicycle parking (location to be confirmed)
 - Proposed upgrade of signage at top of access driveway
 - Proposed improvements near the Scout Hall including to the river fishing platform and the access pathway, plus signage and removable bollards to restrict unauthorised vehicles (throughout Reserve) and ongoing bushland weed removal
 - Proposed future environmental projects including river bank erosion mitigation works (throughout Reserve) and ongoing bushland weed removal
 - Proposed low barrier fence between open park area and bush area (open at both ends), to deter dogs from running through the wetland areas (at recommendation of DBCA)
- POSSIBLE FUTURE IMPROVEMENTS (subject to feasibility and funding)**
- Possible future new river fishing platform - suggest a leaf shaped deck or floating platform
 - Possible future additional reserve signage including directional / informational
 - Possible future upgrade to car parking - recommend natural look 'earth coloured' surfacing (work around existing trees - retain)
 - Possible future parking area for trailers (work around existing trees - retain)
 - Possible future mobile trader bay (work around existing trees - retain)
 - Possible future modification to access driveway entrance and bottom end, to create two vehicle pull-over bays for safer vehicle access and egress / improve general safety of driveway
 - Possible new maintenance access points, with removable bollards
 - Possible future path circuit linking toilets with proposed new river platform
 - Possible future interpretive signage - to tie in with River Heritage Trail
 - Possible future refurbishment of steps at 'dog swim beach'
 - Possible future extension of boardwalk to Scout Hall end (subject to funding - i.e. grants)
 - Possible future security camera - in most suitable location with view to car park and toilets (indicative location shown only)
 - Possible additional dog waste bag dispensers, if required
 - Possible opportunities for 'art in the park' e.g. dog themed / native fauna
 - Possible future enhanced river access for recreational purpose, subject to recommendations from Lower Collier River Master Plan (erosion mitigation) project
 - Proposed incorporation of 'dua' naming on reserve signage, to incorporate Noongar name for the reserve - to be selected and confirmed with the appropriate local Elders (not shown on plan)

Watson Reserve Master Plan - Park Area

DESIGNED	DRAWN DATE	DRAWING NO.	SIZE
VP	20-11-2018	2021-CPT-006-02	A1
DRAWN	AUTHORISED	REVISION	ENDORSED
VP	LB	6-05-2021	26/05/2021 (OCM:149-21)

Not to scale

